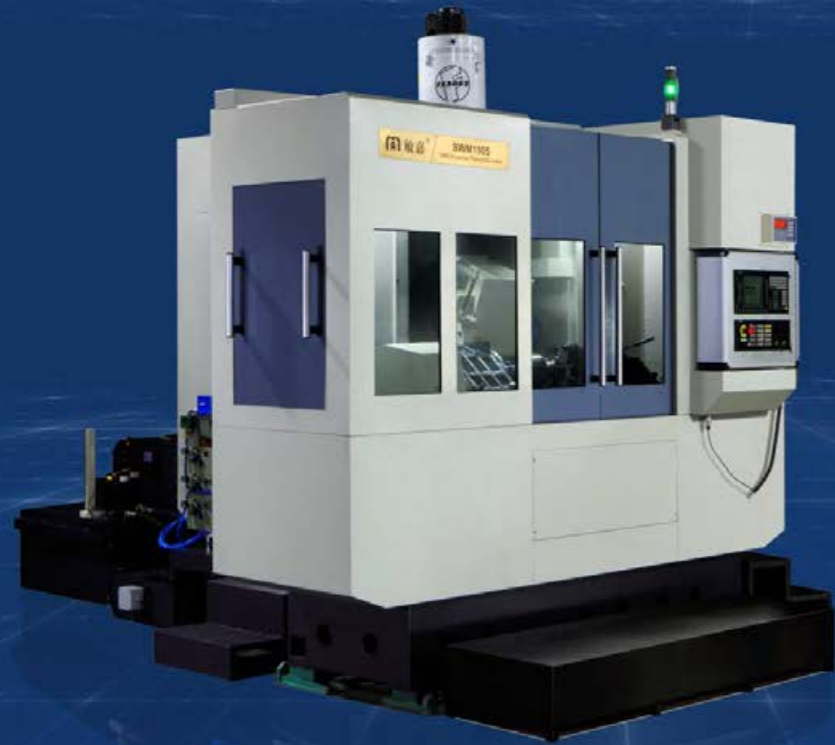


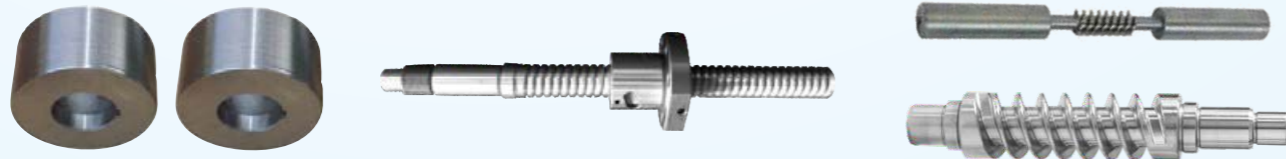
SWM I 505

CNC External Thread Grinder



Grinding External Thread -Circular

- The machine adopt T type mineral casting bed (SWM I 505, SWMI 510).
- The machine grinding wheel can finish external thread with V and trapezoid thread type, such as ball screw , worm shaft, rolling tool, steering component.
- Turntable set up lead angle A-axis ± 25 for grinding large angel and pitch thread with automatic.
- Wearing capacity with automatic compensation (grinding amount 0.01-0.02mm for one time).

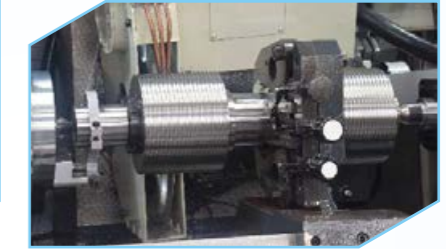


STANDARD CONFIGURATION

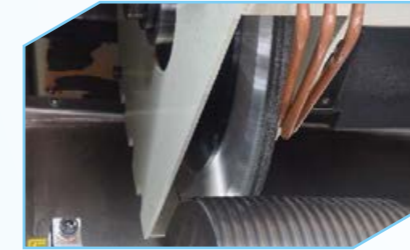
- Siemens 828D control system
- External grinding motor spindle.
- Heidenhain grating ruler X/Z/C axis
- Cutting fluid filtration system
- Spindle coolant system
- Compressed air drying device
- Cabinet air condition
- Automatic lubrication system
- Oil mist absorber
- Heart-shaped clamping
- Hydraulic Tailstock
- Balancing arbor



Grinding small screw



Center support for heavy workpiece



CBNgrinding wheel



Grinding ball screw

TECHNICAL SPECIFICATION:

Model		SWM I 503	SWM I 505	SWM I 510	SWM I 520
Capacity					
Max.length of grinding thread	mm	300	500	1000	2000
Max.grinding diameter	mm	100	350	350	350
Max.distance between center	mm	320	520	1200	2200
Max.workpiece weight	kg	50	50	50	50
Max.lead angle		$\pm 20^\circ$	$\pm 25^\circ$	$\pm 25^\circ$	$\pm 25^\circ$
Spindle					
Grinding wheel size(ODxTHxID)	mm	$\phi 500/10-25/\phi 305H6$	$\phi 500/10-25/\phi 305H6$	$\phi 500/10-25/\phi 305H6$	$\phi 500/10-25/\phi 305H6$
Grinding wheel spindle speed	min-1	50-3000	50-3000	50-3000	50-3000
Grinding wheel motor power	kw	7.5	7.5	7.5	7.5
Dressing wheel size(ODxTHxID)	mm	$\phi 80x\phi 25x30$	$\phi 80x\phi 25x30$	$\phi 80x\phi 25x30$	$\phi 80x\phi 25x30$
Dressing wheel Max.spindle speed	min-1	10000	10000	10000	10000
Straight axis					
X/Z axis travel	mm	350/500	350/750	350/1200	350/2250
Feed rate	m/min	8	8	8	8
Machining precision					
Grinding trapezoid screw	mm	5 levels(accord with std.JB/2886-2008)			
Grinding ball screw	mm	P2 levels (accord with sld.GB/T17587.3-1998)			
Tooth surface roughness	m	Ra0.4			
Other					
Total power	kw	20			
Machine weight	T	8.5	10.5	12	14
Machine size(L/W/H)	mm	3300x3000x2200	2900x3400x2800	2800x4100x2600	3400x6200x3800