

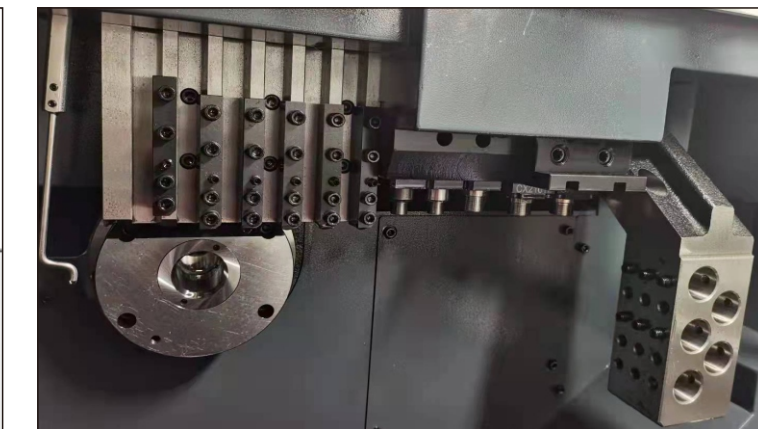
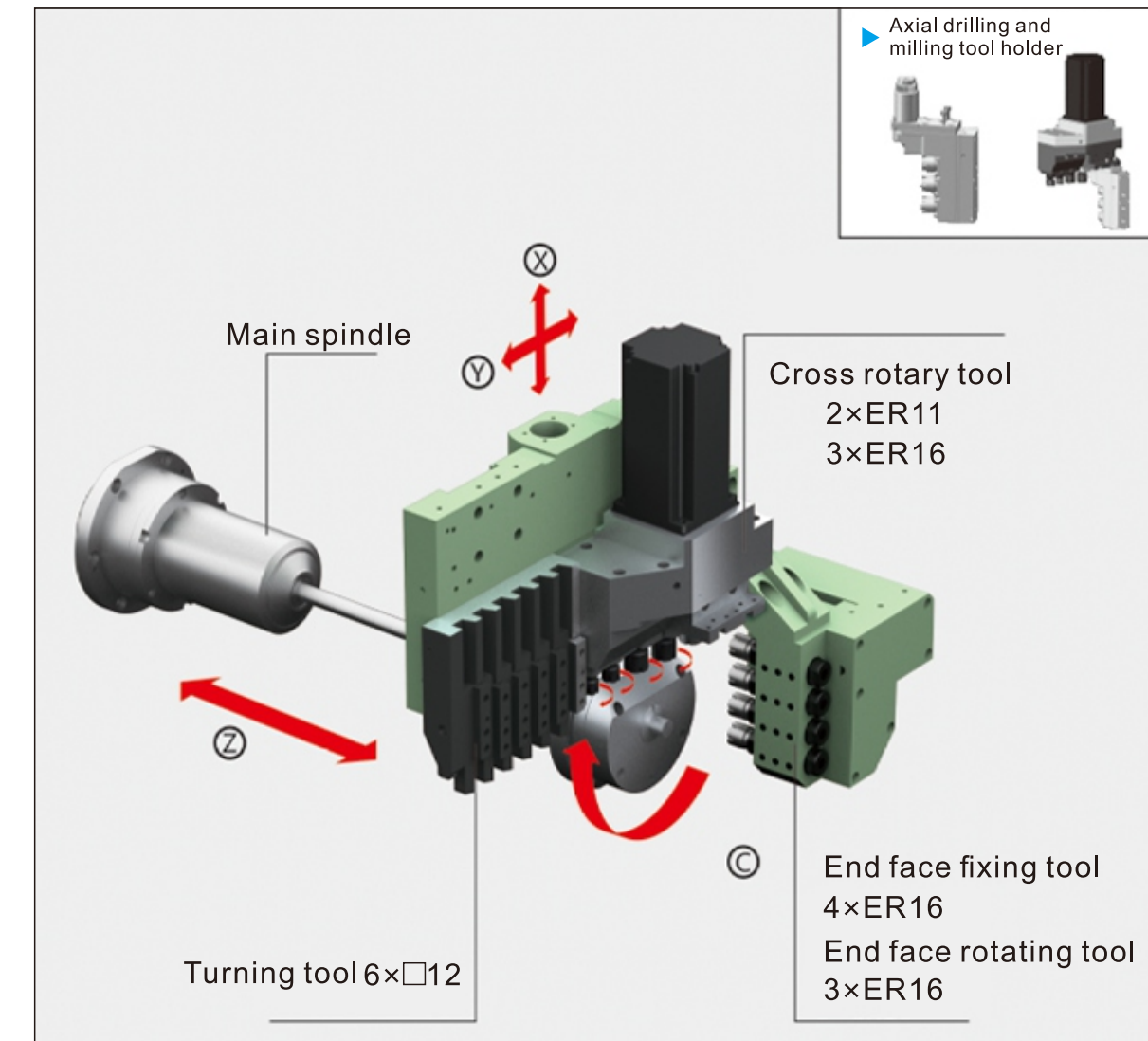
ST-203/263/323(I/II/III)

Swiss type automatic lathe

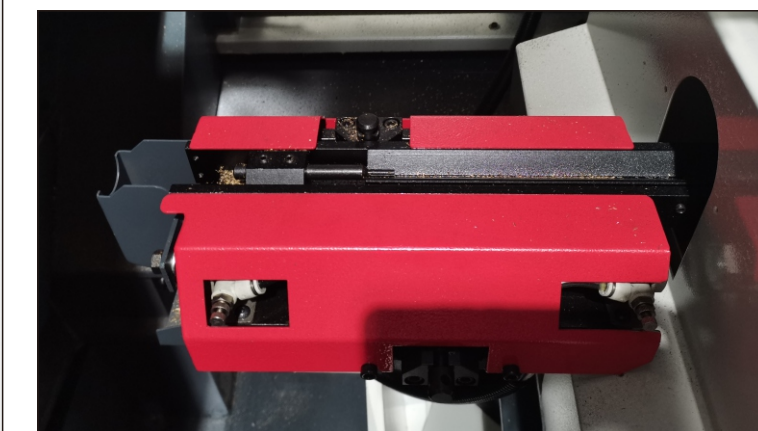
—Sliding Headstock Type



- ▶ Machining Max. dia.20/26 /32mm,length 240mm workpiece.
- ▶ Single spindle is 7KW motor spindle.
- ▶ Temperature compensation program improve workpiece precision when cold start.
- ▶ Chip breaking function by low frequency vibration technology.(optional)
- ▶ Cut-off tool breakage detector.



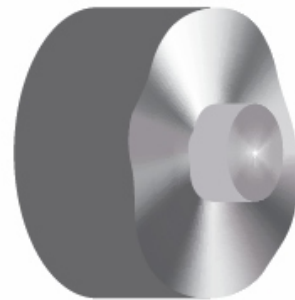
X/Y/Z 3-axis move by C axis together



Workpiece receiver

Model different tool post	I	II	III
Gang turning tool	11×□12	5×□12+1×□16	6×□12
Side rotary tool	/	2×ER11;3×ER16	2×ER11;3×ER16
End face tool post	5×ER16 fixing tool	5×ER16 fixing tool	2×ER11 fixing tool 3×ER16 rotary tool

Representation of the cutting



Comparison of chips

Material SUS304 Weight: 14.3 g (same scale)



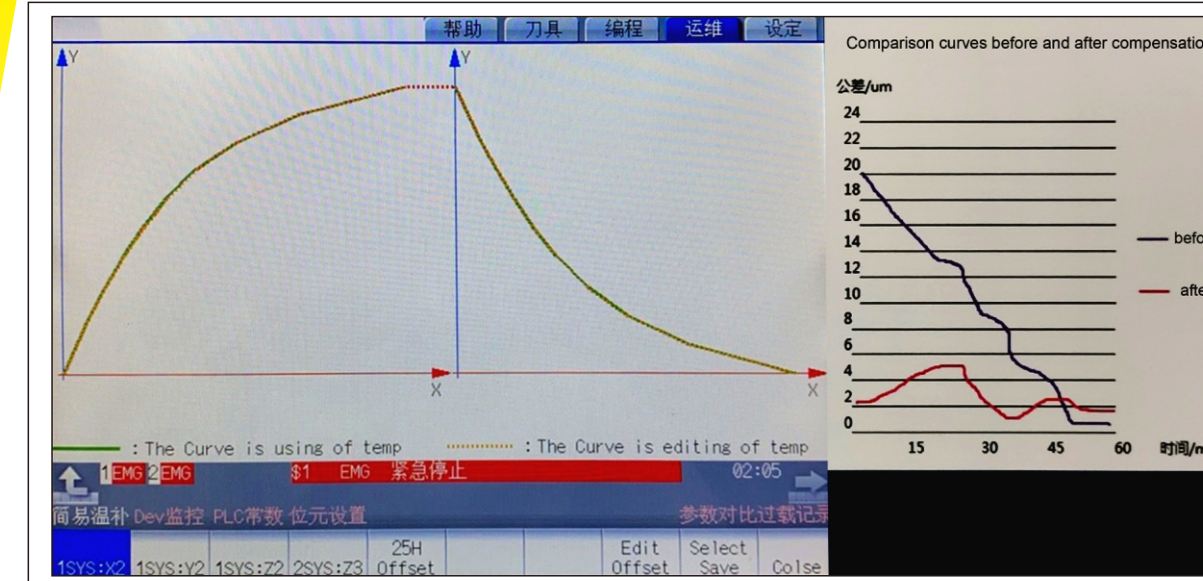
Chips generated by customary cutting



Chips generated with LFV cutting



Position adjustable operation panel

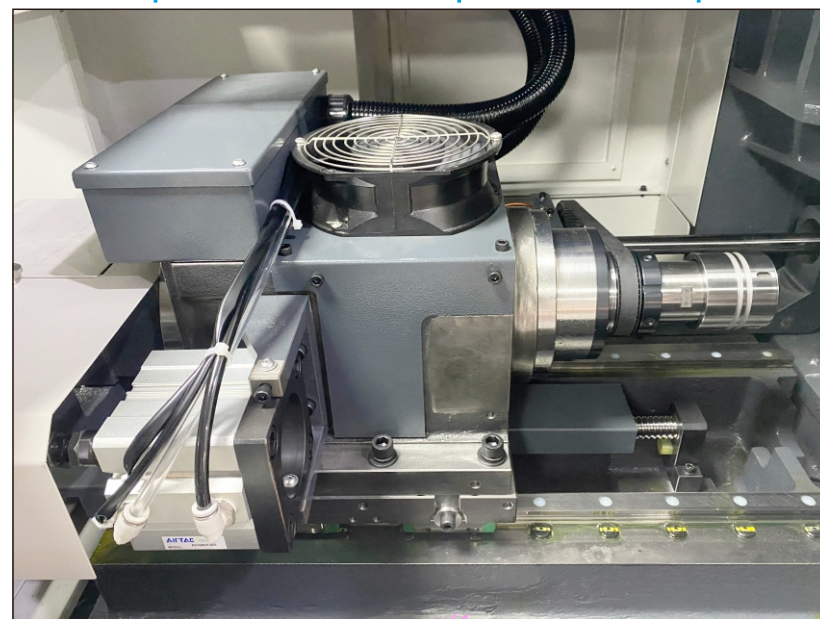


Mitsubishi E80 control system with 2nd development interface, temperature compensation program let workpiece stable continuous machining, improve precision and quality rate.

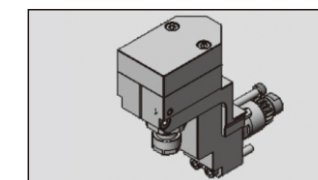
Air pressure detector



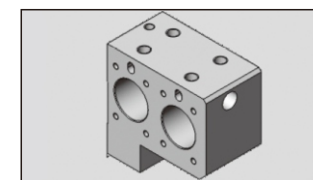
Main spindle is 8000rpm motor spindle



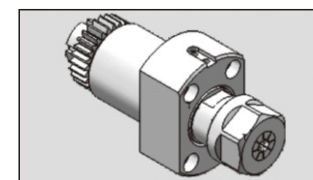
Back axis tool expansion



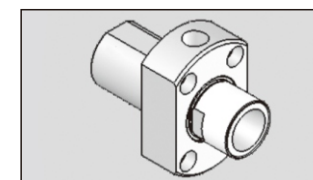
Radial drilling and milling tool holder



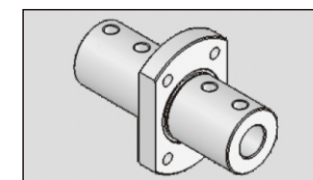
Expansion tool holder



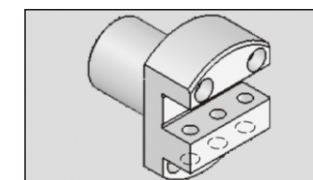
Axial drilling and milling tool holder



Axial drilling tool holder

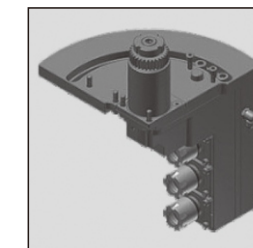


Boring tool holder

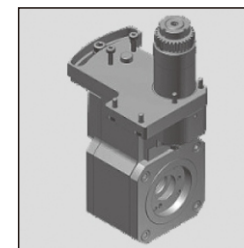


Turning tool holder

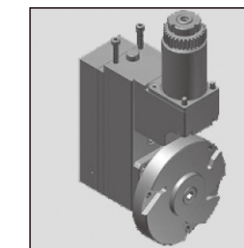
Extended tool holder with power head



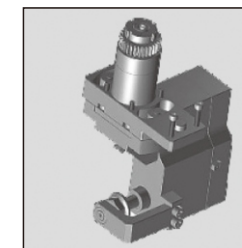
Angle adjustment front eccentric holder
Maximum speed: 6000RPM
Working angle: 0~90°
Main spindle: ER16
Back spindle: ER11



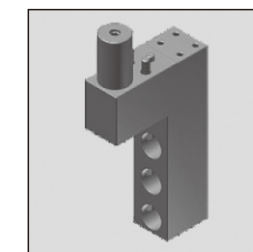
Whirling milling holder
Maximum speed: 6000RPM
Max size of milling tooth: M10
Angle adjustment range: ±15°



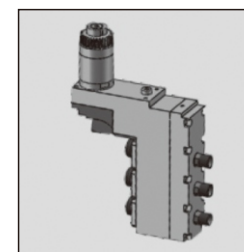
Multi-milling holder
Maximum speed: 3000RPM
Maximum outer diameter of blade: ø95



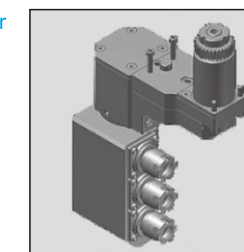
Gear hobbing holder
Maximum speed: 6000RPM
Angle adjustment range: ±15°



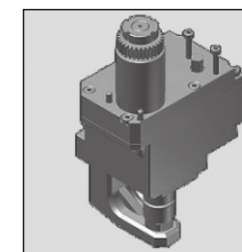
End face drilling holder
Shank diameter: ø34
Aperture: ø22
Maximum outer diameter of blade: ø95



Front eccentric holder
Maximum speed: 5000RPM
Collet: 3×ER16+3×ER11

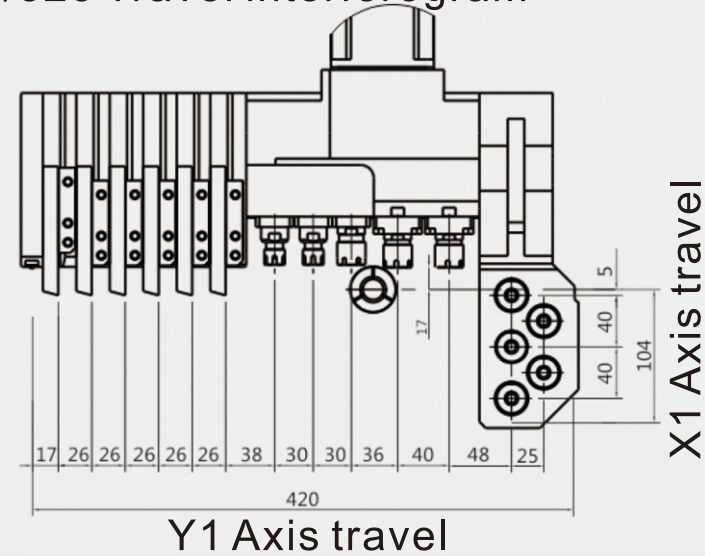


360° front rotary holder
Maximum speed: 6000RPM
Angle adjustment range: 180°

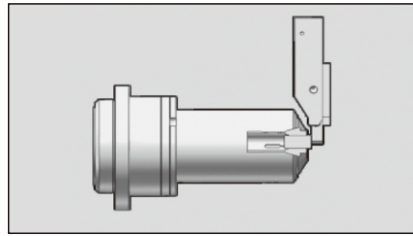


Saw milling holder
Maximum speed: 4000RPM
Saw blade aperture: ø12.7
Maximum outer diameter of saw blade: ø95

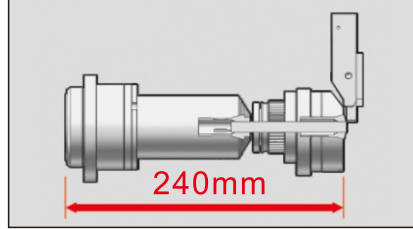
203/263/323 Travel interferogram



Non-guide bushing type

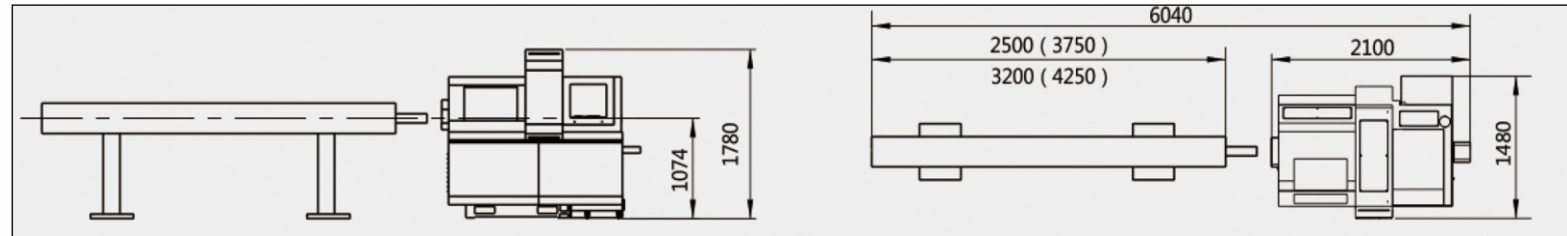


Guide bushing type



Guide bushing can be more accurate when processing long-size workpieces, Non-guide bushing type is for short workpiece.

Machine layout



Optional configuration

Bar feeder



Mist collector



Chip conveyor



High pressure oil pump



Standard configuration:

- Mitsubishi E80 control system
- Main spindle chucking unit
- Rotary guide bushing unit
- Gang rotary tool driving unit
- Coolant unit
- Lubricating oil supply unit
- Cut-off tool breakage detector
- Workpiece receiver
- Main spindle coolant unit
- Electrical cabinet heat exchange
- Work lamp
- Chip box

Optional configuration:

- High pressure oil pump
- Coolant mist collector
- Chip conveyor
- Bar feeder
- Syntec 22TB control system

TECHNICAL SPECIFICATION :

Model	Item	ST-203	ST-263	ST-323
Capacity	Max. machining dia.	Φ20mm	Φ26mm	Φ32mm
	Max. machining length	240mm		
	Max. drilling dia.of front side	Φ10mm		Φ13mm
	Max. tapping of front side	M8		
	Spindle through-hole dia.	Φ23mm	Φ28mm	Φ38mm
	Power	Control system	Mitsubishi E80	
Machine power		7kw		
Main spindle speed		2.2/3.7kw		
C axis indexing		0.001°		
Main spindle max speed		8000rpm		
Feedrate		32(Y1/Z1);20(X1)m/min		
Feed motor power		1kw		
Gang turning tool		6×□12	5×□12+1×□16	6×□16
Side rotary tool(II/III model)		2×ER11+3×ER16		3×ER16+1×ER20
Front side tool post		Max. drilling dia.	Φ10	
	Max. tapping	M8		
	Cross rotary tool speed	5000rpm		
	Cross rotary tool power	1kw		
	End face fixing tool qty.	5×ER16		
	End face fixing tool dia.	Φ10mm	Φ13mm	
	End face fixing tool tapping	M8		
	Other	Machine size L×W×H	2100×1480×1780mm	
Machine net weight		1800kg	2000kg	2100kg

SAMPLE MACHINING

